



*Montana Tunnels Mining, Inc.*

## Mine Overview

# Historic Mining District



POTTER & CHANDLER, WICKES, MONTANA



MILL AT CORBIN-OLD ALTA MINE



POTTER & CHANDLER-CHARCOAL KILNS-WICKES, MT



THE BOSTON & MONTANA GOLD MINES, BACH, CORY & CO.

GREGORY, MONTANA TERRITORY, DECEMBER 14, 1886



# Historic Mines Near Montana Tunnels





# Montana Tunnels Mine Overview & Mill Facility

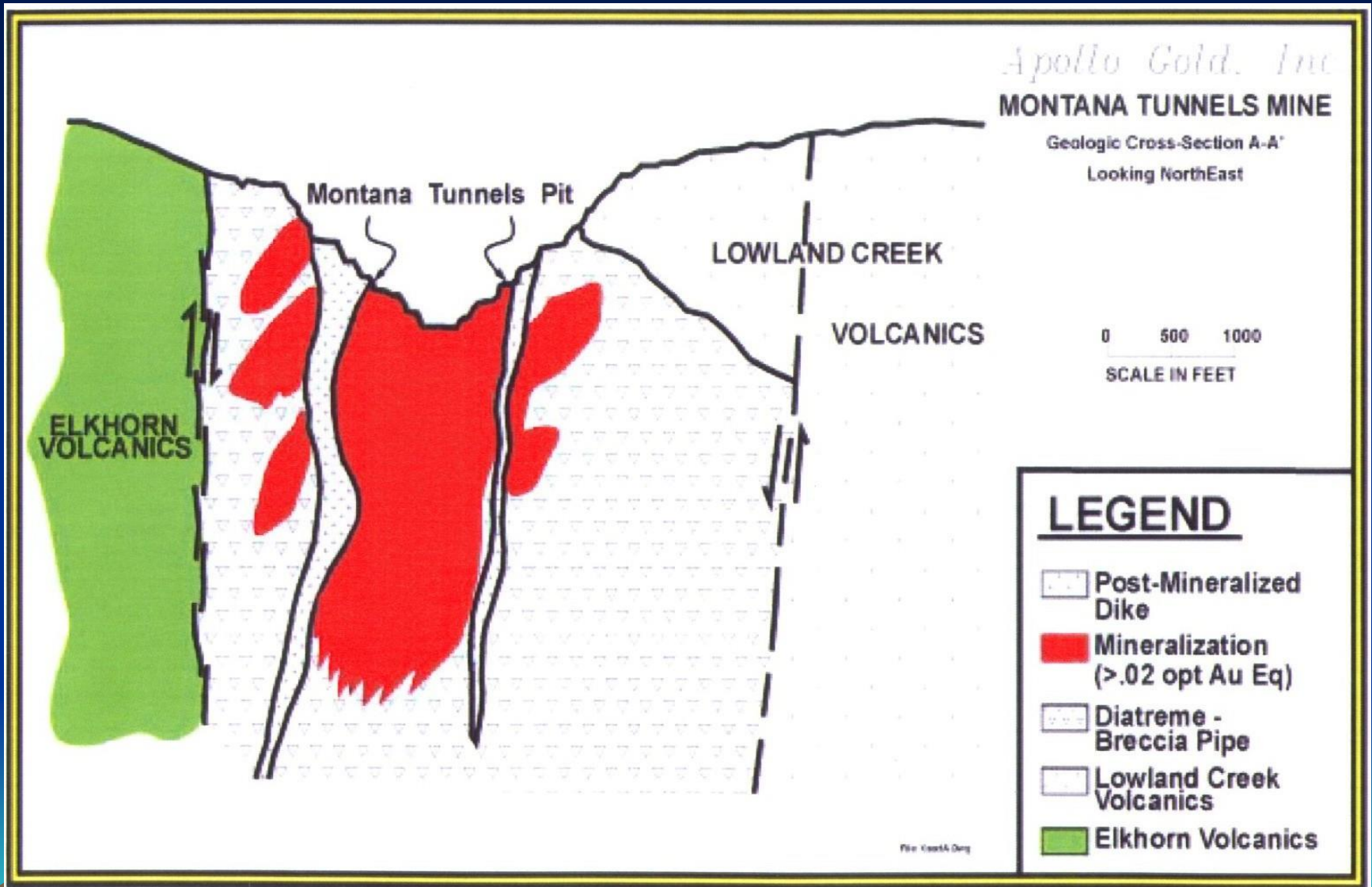








# General Cross Section



# Typical Veins in Central Ore Body





# Lead/Zinc Sulfides and Pyrite Vein





# Charcoal in Diatreme





# Gold and Silver





# Mine Operations





# Mill Operations



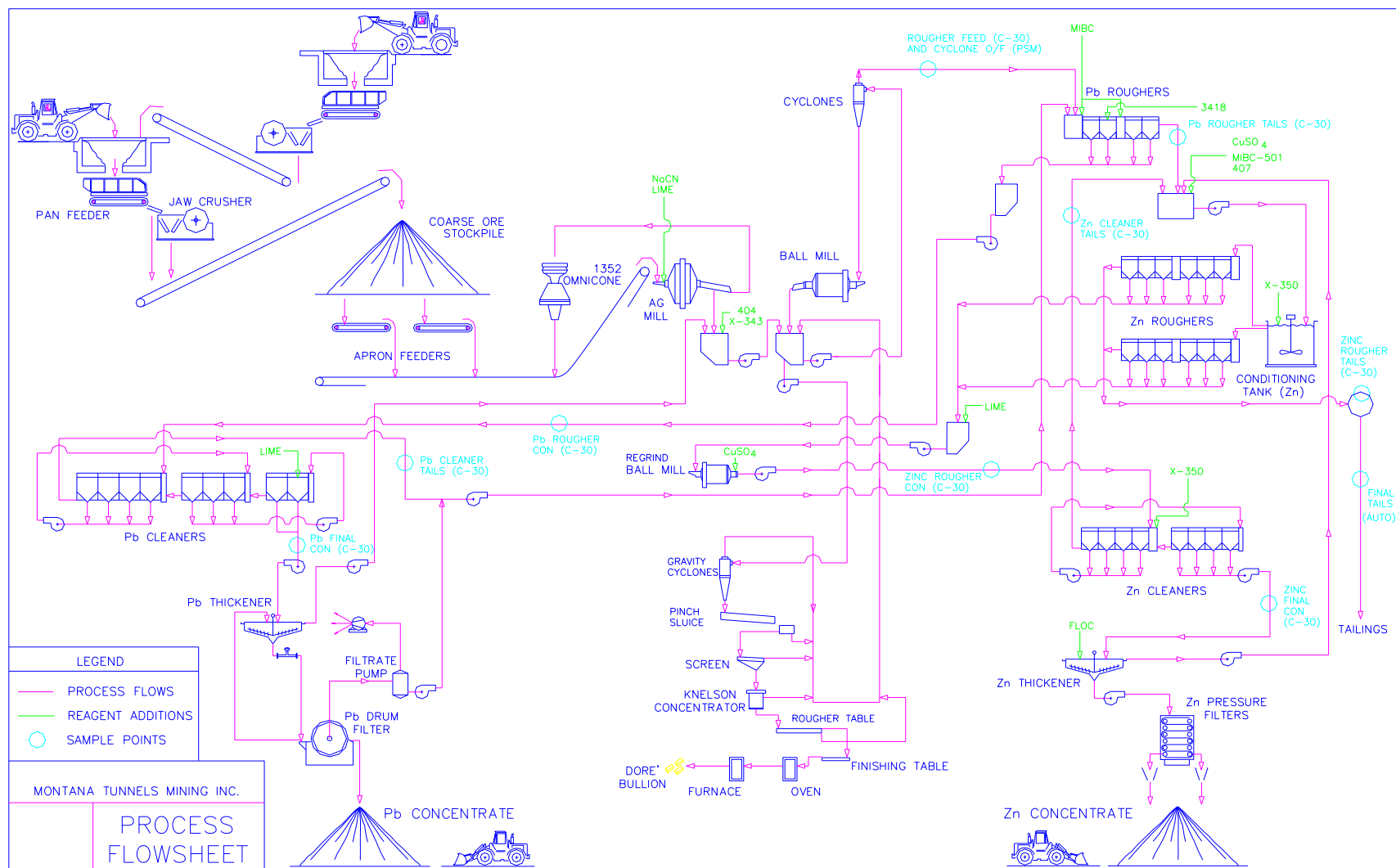


# Concentrate Filtration and Shipping





# Mill Process Circuits



# Gravity Gold Collection and Refining





# Montana Tunnels Production History

- Mine Startup February 1986
- Length of Operation 23 Years
- Total Ore Processed 100 Million tons
  - >Gold Recovered 1.6 Million oz.
  - >Silver Recovered 30 Million oz.
  - >Lead Recovered 300 Million lbs.
  - >Zinc Recovered 1 Billion lbs.

\*New Wealth Created

\$1.2 Billion



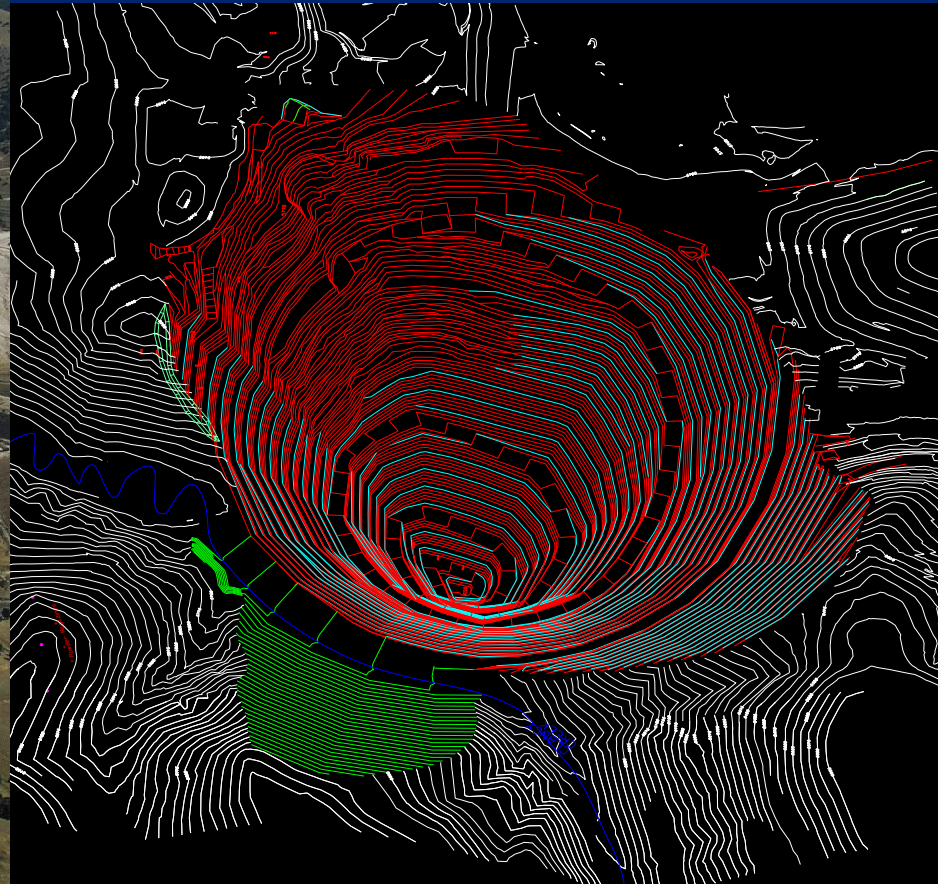


# Tailings Impoundment





# Clancy Creek Diversion Area





# Wetlands Mitigation Areas





